

## Fire-rated Aluminum Curtain wall system

**ALUFLAM® has pioneered the innovative solution to what was long considered an impossible dream (and a barrier to truly beautiful commercial architectural design), the development of rugged, versatile aluminum framing technology for fire-rated commercial window applications.**

**The ALUFLAM system has been tested and approved and is available to the architectural and construction communities worldwide.**



### Features:

- The clean, sharp lines of narrow stile aluminum framing
- Large, wire-free glass areas
- Barrier to radiant heat through insulated frame and glazing
- Increased design freedom
- Tested and approved to national and international fire codes
- Multitude of finish options
- Simple to install
- High impact resistance
- No corrosion
- Energy efficient
- Reduced noise transmission
- Interior and exterior installation
- 60/90/120 min ratings

### Framing:

The revolutionary all-aluminum framing system is based on high quality extruded profiles, filled with a proprietary insulating compound.

### Glazing:

Aluflam incorporates Vetrotech Saint Gobain clear laminated fire glazing. Glazing conforms to EN 12600 standards for impact while providing excellent clarity and sound reduction. The Aluflam system is approved with both Swissflam and Contraflam glazing which feature superior heat barrier properties.

### Finishes:

Aluflam can offer a number of factory prefinished coatings for its fire-rated aluminum products.

These include:

- Anodizing
- Powder coating
- Architectural paint finishes

### Listings:

These curtain wall assemblies are Listed by EU NB laboratories to the EN 1364-1 standard. File numbers: IFCI/545, IFCI/572, R21588

Documentation:

Go to [www.aluflam.com/specs/](http://www.aluflam.com/specs/) for:

- CAD drawings
- CSI specifications
- Installation instruction

**Rev: February 2010**

Aluflam A/S, Langebjergvænget 13, 4000 Roskilde, Denmark  
Tel. +45 4675 0611 Fax +45 4675 0811 [www.aluflam.com](http://www.aluflam.com)  
Copyright © 2010 Aluflam A/S

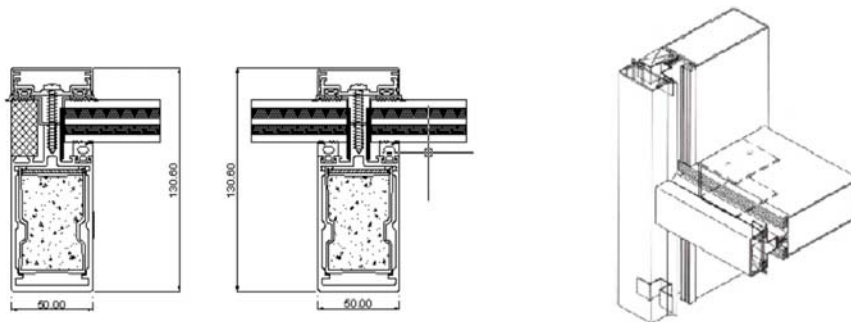
## Fire-rated Aluminum Curtain wall System

### Description

Designation	EI60	EI90	EI120
Maximum fire rating	60 min.	90 min.	120 min.
Maximum individual exposed glass area (m <sup>2</sup> )	3.45	2.64	3.00
Maximum exposed width (m.)	1.30	1.10	1.23
Maximum exposed height (m.)	2.65	2.40	2.44
Frame width (mm.)	50	60	60
Frame depth (mm.)	(h)126.5 x (v)131.5	(h)148 x (v)152	(h)174 x (v)176
Glass weight (kg/m <sup>2</sup> )	52	72	108
Frame weight (kg/m)	(h)5.2 ; (v)5.6	(h)6.0 ; (v)7.6	(h)6.0 ; (v)7.6
NB File number	IFCI/545	IFCI/572	R21588

*v= vertical profile; h= horizontal profile*

### Framing



Looking for custom solutions:  
Alufлам can provide a variety of  
custom solutions- both on glass  
and framing.  
Contact us for details!

Note: Depth based on 25 mm glass thickness for interior installation

See our website for our full range of design options : [www.alufлам.com](http://www.alufлам.com)

Contact: Alufлам A/S - A complete list of approved Alufлам representatives is available online at  
[www.alufлам.com/contact](http://www.alufлам.com/contact)  
E-mail: [info@alufлам.dk](mailto:info@alufлам.dk)

**Rev: February 2010**

Alufлам A/S, Langebjergvænget 13, 4000 Roskilde, Denmark  
Tel. +45 4675 0611 Fax +45 4675 0811 [www.alufлам.com](http://www.alufлам.com)  
Copyright © 2010 Alufлам A/S