

Fire-rated Aluminum Doors

ALUFLAM® has pioneered the innovative solution to what was long considered an impossible dream (and a barrier to truly beautiful commercial architectural design), the development of rugged, versatile aluminum framing technology for fire-rated commercial window applications.

The ALUFLAM system has been tested and approved and is available to the architectural and construction communities worldwide.



Features:

- The clean, sharp lines of narrow stile aluminum framing
- Large, wire-free glass areas
- Barrier to radiant heat through insulated frame and glazing
- Increased design freedom
- Tested and approved to national and international fire codes
- Multitude of finish options
- Top of the line hardware options - conforming to EU standards
- Simple to install
- High impact resistance
- No corrosion
- Energy efficient
- Reduced noise transmission
- Available in single leaf or double design
- Interior and exterior installation
- Special hardware solutions available
- 30/45/60 min. ratings

Framing:

The revolutionary all-aluminum framing system is based on high quality extruded profiles, filled with a proprietary insulating compound.

Glazing:

Aluflam incorporates Vetrotech Saint Gobain clear laminated fire glazing. Glazing conforms to EN 12600 standards for impact while providing excellent clarity and sound reduction. The Aluflam system is approved with both Swissflam and Contraflam glazing which feature superior heat barrier properties.

Finishes:

Aluflam can offer a number of factory prefinished coatings for its fire-rated aluminum products.

These include:

- Anodizing
- Powder coating
- Architectural paint finishes

Listings:

These door assemblies are Listed by EU NB laboratories to the EN 1634-1 standard. NB File number Fires-FR-028-09_AUNE

Documentation:

Go to www.aluflam.com/specs/ for:

- CAD drawings
- CSI specifications
- Installation instructions

Rev: February 2010

Aluflam A/S, Langebjergvænget 13, 4000 Roskilde, Denmark
Tel. +45 4675 0611 Fax +45 4675 0811 www.aluflam.com
Copyright © 2010 Aluflam A/S

Fire-rated Aluminum Doors

Description	Single door	Double door (2 Active Leaves) DD-AA	Double door (1 Active Leaf) DD-AF
Designation	SD	DD-AA	DD-AF
Fire rating	30/45/60	30/45/60	30/45/60
Maximum door size (mm.)	1300 x 2300	1800 x 2400	2500 x 2500
Frame width (mm.)	62	62	62
Frame depth (mm.)	85	85	85
Frame weight (kg/m.)	4,42	4,42	4,42
Glass weight (kg/m ²)	34/ 42/ 52	34/ 42/ 52	34/ 42/ 52
NB File number	Fires-FR-028-09	Fires-FR-028-09	Fires-FR-028-09

Looking for custom solutions?

Aluflam can provide a variety of custom solutions - both on framing and glass. Contact us for details!

Hardware

Description	Single door/ SD
Closer	Dorma TS93 series
Hinges	Dr. Hahn
Mortise lock	Assa Abloy 220-35
Trim	Randi-Line

Description	Double door/ DD-AF
Closer/ coordinator	Dorma TS93 series
Hinges	Dr Hahn
Mortise lock	Assa Abloy 220-35
Trim	Randi-Line

Description	Double door/ DD-AA
Closer	Dorma TS93 series
Hinges	Dr. Hahn
Vertical rod exits	Dorma F5400 series

Hardware Options

In addition to the standard hardware, Aluflam can offer options such as 250mm kickplates, rim exit devices, thresholds, electric hardware, wiring, floor closers, etc. Please inquire with Aluflam sales person for optional hardware brands, configurations and solutions for your project.

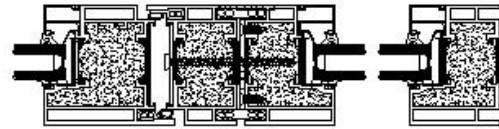
Rev: February 2010

Aluflam A/S, Langebjergvænget 13, 4000 Roskilde, Denmark
Tel. +45 4675 0611 Fax +45 4675 0811 www.aluflam.com
Copyright © 2010 Aluflam A/S

Sidelights / Transoms

The Aluflam fire-rated door frames integrate perfectly with the fire-rated storefront framing system

- Fixed transoms
- Fixed sidelights
- Door / wall integration



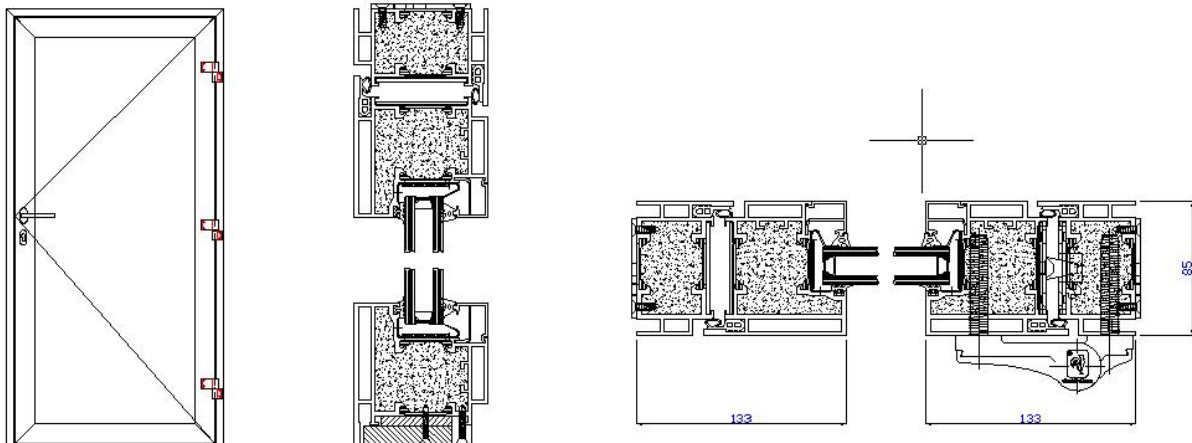
Finishes

Aluflam can offer a number of factory pre-finished coatings for its fire-rated aluminum products. These include:

- Anodizing
- Epoxy powder coats
- Architectural paint finishes

Single door

SD

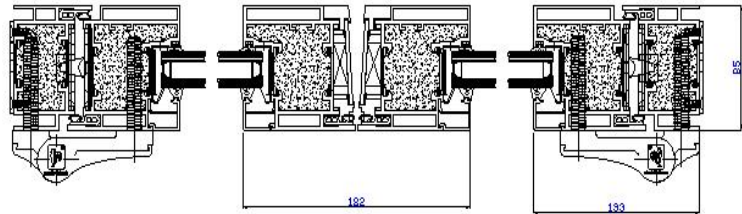
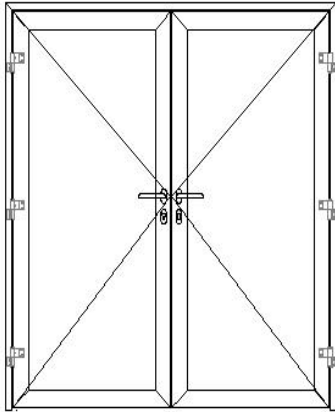


Rev: February 2010

Aluflam A/S, Langebjergvænget 13, 4000 Roskilde, Denmark
Tel. +45 4675 0611 Fax +45 4675 0811 www.aluflam.com
Copyright © 2010 Aluflam A/S

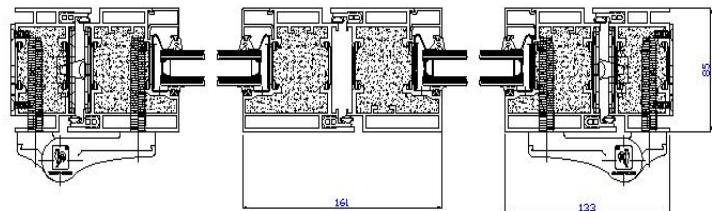
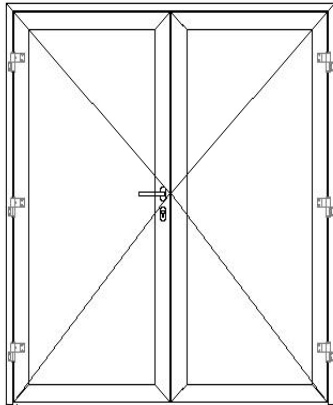
Double door- Active/ Active

DD-AA



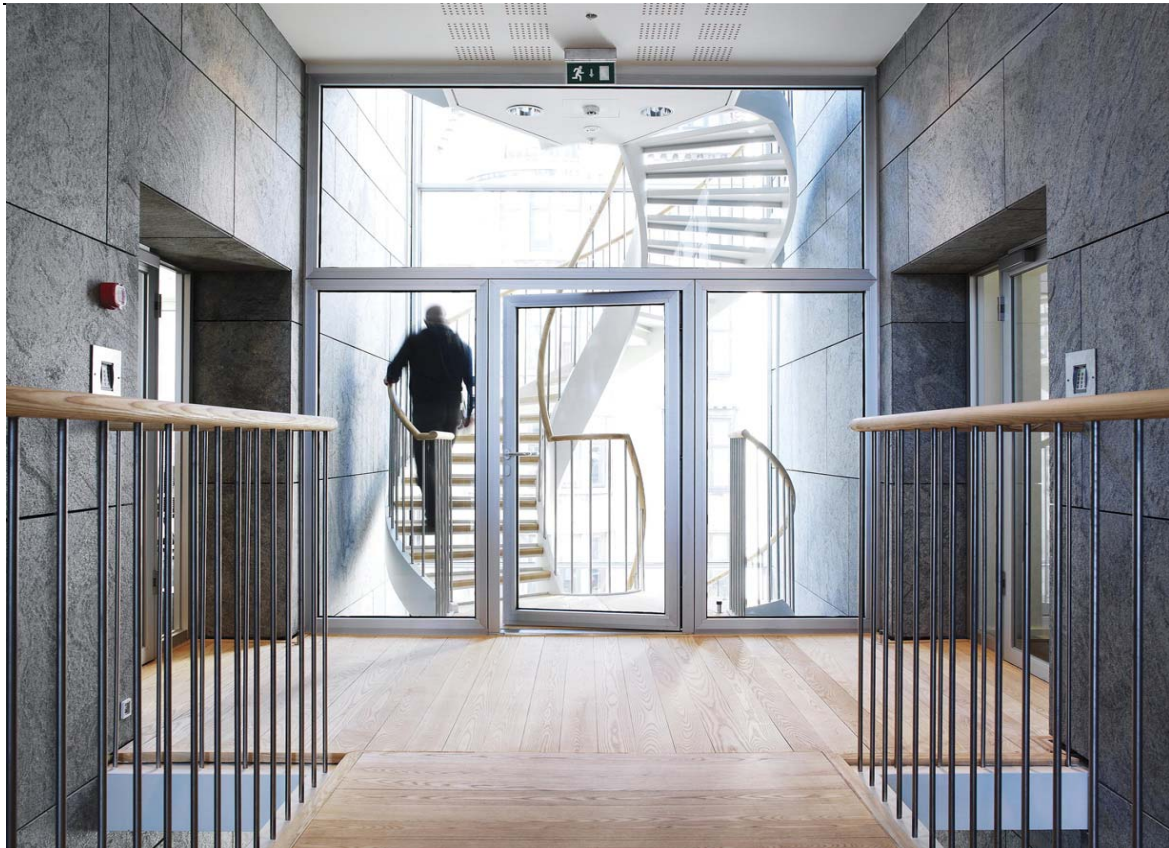
Double door- Active/ Fixed

DD-AF



Rev: February 2010

Alufam A/S, Langebjergvænget 13, 4000 Roskilde, Denmark
Tel. +45 4675 0611 Fax +45 4675 0811 www.alufam.com
Copyright © 2010 Alufam A/S



See our website for our full range of design options : www.alufлам.com

Contact: Alufлам A/S - A complete list of approved Alufлам representatives is available online at www.alufлам.com/contact

E-mail: info@alufлам.dk

Rev: February 2010

Alufлам A/S, Langebjergvænget 13, 4000 Roskilde, Denmark
Tel. +45 4675 0611 Fax +45 4675 0811 www.alufлам.com
Copyright © 2010 Alufлам A/S