
Fire-rated Aluminum Doors

ALUFLAM® has pioneered the innovative solution to what was long considered an impossible dream (and a barrier to truly beautiful commercial architectural design), the development of rugged, versatile aluminum framing technology for fire-rated commercial window applications.

The ALUFLAM system has been tested and approved and is available to the architectural and construction communities worldwide.



Features:

- The clean, sharp lines of narrow stile aluminum framing
- Large, wire-free glass areas
- Barrier to radiant heat through insulated frame and glazing
- Increased design freedom
- Tested and approved to national and international fire codes
- Multitude of finish options
- Top of the line hardware options - conforming to EU standards
- Simple to install
- High impact resistance
- No corrosion
- Energy efficient
- Reduced noise transmission
- Available in single leaf or double design
- Interior and exterior installation
- Special hardware solutions available
- 30/45/60 min. ratings

Framing:

The revolutionary all-aluminum framing system is based on high quality extruded profiles, filled with a proprietary insulating compound.

Glazing:

Aluflam incorporates Vetrotech Saint Gobain clear laminated fire glazing. Glazing conforms to ISO 614; ISO 3254; ISO 1095. The Aluflam system is approved with both Contraflam and Contraflam Lite glazing which feature superior heat barrier properties.

Finishes:

Aluflam can offer a number of factory prefinished coatings for its fire-rated aluminum products.

These include:

- Anodizing
- Powder coating
- Architectural paint finishes

Listings:

These door assemblies are certified by Bureau Veritas acc. to IMO Resolution A.754 (18).
File numbers PG11324 / 99R1 3211 B / PG 10776

Documentation:

Go to www.aluflam.com/specs/ for:

- CAD drawings
- CSI specifications
- Installation instructions

Rev: February 2010

Aluflam A/S, Langebjergvænget 13, 4000 Roskilde, Denmark
Tel. +45 4675 0611 Fax +45 4675 0811 www.aluflam.com
Copyright © 2010 Aluflam A/S

Fire-rated Aluminum Doors

Description	Single door	Double door (1 Active Leaf) DD-AF
Designation	SD	DD-AF
Fire classification	B15 / A60	A60
Maximum door size (mm.)	1200x2175 / 1000 x 2200	2124 x 2257
Frame width (mm.)	62	62
Frame depth (mm.)	85	85
Frame weight (kg/m.)	4,42	4,42
Glass weight (kg/m ²)	34 / 52	52
NB File number	PG11324 / 99R1 3211 B	PG 10776

Looking for custom solutions?

Aluflam can provide a variety of custom solutions - both on framing and glass. Contact us for details!

Hardware

Description	Single door/ SD	Description	Double door/ DD-AF
Closer	Dorma TS93 series	Closer/ coordinator	Dorma TS93 series
Hinges	Dr. Hahn	Hinges	Dr Hahn
Mortise lock	Assa Abloy 220-35	Mortise lock	Assa Abloy 220-35
Trim	Randi-Line	Trim	Randi-Line

Hardware Options

In addition to the standard hardware, Aluflam can offer options such as 250mm kickplates, rim exit devices, thresholds, electric hardware, wiring, floor closers, etc. Please inquire with Aluflam sales person for optional hardware brands, configurations and solutions for your project.

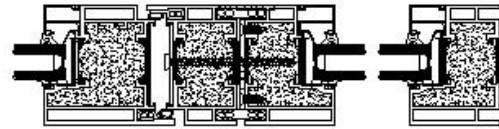
Rev: February 2010

Aluflam A/S, Langebjergvænget 13, 4000 Roskilde, Denmark
Tel. +45 4675 0611 Fax +45 4675 0811 www.aluflam.com
Copyright © 2010 Aluflam A/S

Sidelights / Transoms

The Aluflam fire-rated door frames integrate perfectly with the fire-rated storefront framing system

- Fixed transoms
- Fixed sidelights
- Door / wall integration



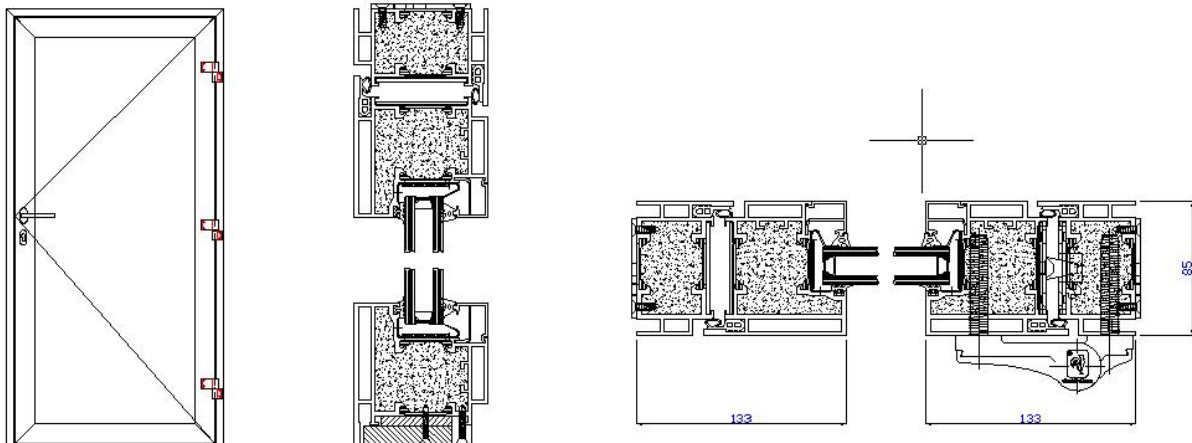
Finishes

Aluflam can offer a number of factory pre-finished coatings for its fire-rated aluminum products. These include:

- Anodizing
- Epoxy powder coats
- Architectural paint finishes

Single door

SD

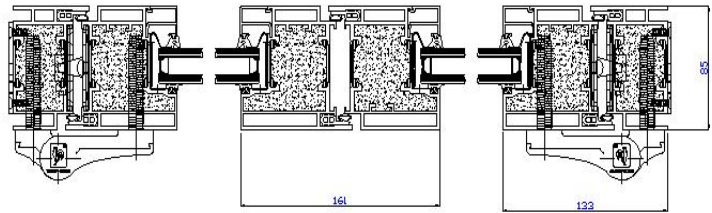
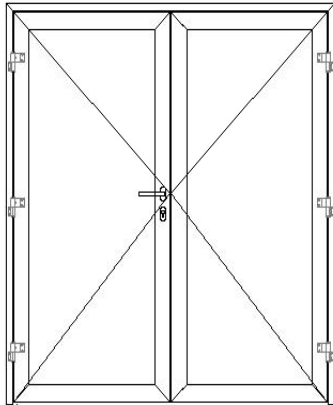


Rev: February 2010

Aluflam A/S, Langebjergvænget 13, 4000 Roskilde, Denmark
Tel. +45 4675 0611 Fax +45 4675 0811 www.aluflam.com
Copyright © 2010 Aluflam A/S

Double door- Active/ Fixed

DD-AF



See our website for our full range of design options : www.alufam.com

Contact: Alufam A/S - A complete list of approved Alufam representatives is available online at www.alufam.com/contact

E-mail: info@alufam.dk

Rev: February 2010

Alufam A/S, Langebjergvænget 13, 4000 Roskilde, Denmark
Tel. +45 4675 0611 Fax +45 4675 0811 www.alufam.com
Copyright © 2010 Alufam A/S